



COMING UP

FOOT-e TIMES SA

ROUND 18 ISSUE

FEATURE STORY

**WHAT WE LEARNT FROM ROUND 17
PLUS THE MOST COMPREHENSIVE
ROUND 18 PREVIEWS**



FIGHTBACK 5000

Let's double our Double Blues
sturtfc.com.au/membership



FOOT-e TIMES SA

Comprehensive Coverage of South Australian Football

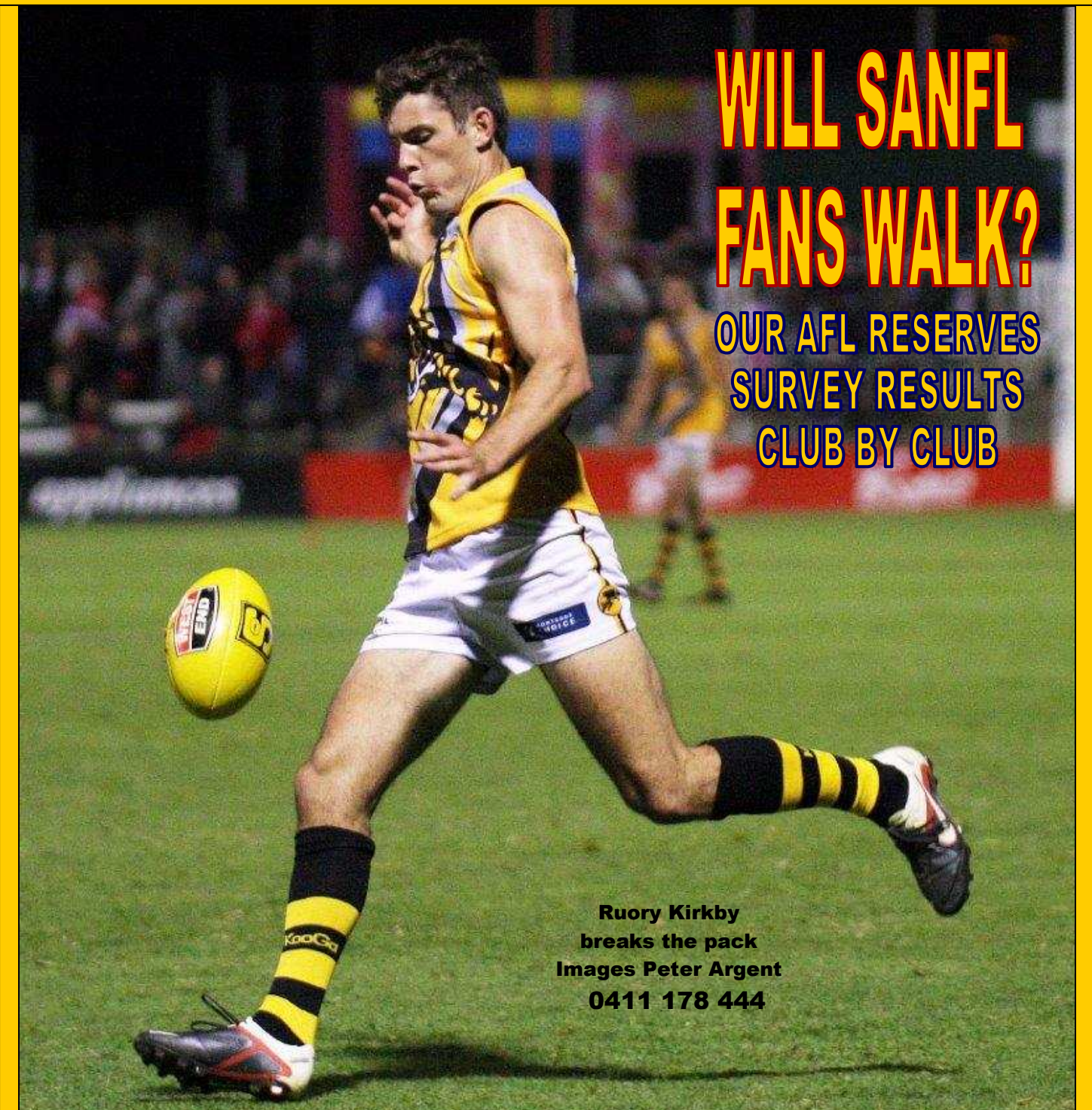
2013 Issue 18 (Part 1) : Thursday July 25

MY LEFT FOOT

DON COOPER PICKS HIS ALL LEFTIES TEAM

**WILL SANFL
FANS WALK?**

**OUR AFL RESERVES
SURVEY RESULTS
CLUB BY CLUB**



Ruory Kirkby
breaks the pack
Images Peter Argent
0411 178 444



FOOT-e TIMES SA

FOOT-e TIMES SA OBJECTIVES

Important issues in South Australian Football will be covered in detail.

There will be a diversity of opinions with every club perspective covered.

Reader contributions will be encouraged

We will have the most comprehensive SANFL Game Previews

We will be a one stop shop for SANFL statistics and media coverage

There will be solid coverage of football beyond just the local SANFL league competition

We will ensure there is regular recognition of our state's football history & heritage.

THE FOOT-e TIMES SA TEAM

Phil Herden

Peter Argent

Phil Aspinall

Don Cooper

John Nankivell

CONTACT US

E-mail: footetimes@gmail.com

PLEASE NOTE

FOOT-e TIMES SA is NOT an official publication of the SANFL or any of its clubs and any opinions carried within this publication should not be taken as those of the SANFL or any of its clubs.

All images courtesy of Peter Argent & available for sale.

2013 ROUND 17 EDITION

Thursday July 25th 2013

CONTENTS (Full Issue)

FEATURE SECTION (PART ONE)

3) Welcome

5) Feature Story

My Left Foot .. Don Cooper

17) What We Learnt

25) ALF Reserves Survey results

36) Coming Up

PREVIEW SECTION (PART TWO)

38) Port v Glenelg Preview

42) Norwood v West Preview

46) Eagles v Sturt Preview

50) North v South Preview

54) Last Week Wrap

55) Individual Stats Leaders

58) Team Stats Rakings

60) Quarter By Quarter

61) Injury List

62) State Of Play

63) Arrangements

64) 2013 Schedule & Results

66) Media Watch / Tipping Ugly



Peter LW Argent

Freelance Photojournalist

Managing Editor - Barracker Publications

pla.wordsmith@bigpond.com

0411 178444

(08) 82978448

Sports, travel & wine writer - award winning photographer
graphic design - book design & publishing - author

WELCOME

EDUCATION STARTS WITH COMMUNICATION

It may just have been a media grab but comments by Crows Chairman Rob Chapman at the Glenelg Lunch last Friday, that SANFL people need to be "educated" about the benefits of his club's reserves proposal left me a bit bemused.

Surely he was referring to the SANFL league directors for there has been no attempt to communicate with SANFL fans.

Whilst there is an initial proposal presented to SANFL league directors last month, there is nothing official in the public domain about the Crows reserves proposal.

Offers by **FOOT-e TIMES SA** to give the AFC free & unedited access to SANFL club members through this publication have not been taken up, citing confidentiality.

Resistance to change is a normal human emotion often heightened by supporters within a sporting club environment where passions run high and just walking away is always an option.

Any text book guide to effecting change successfully talks about getting "buy in" from those involved. Ie making them feel part of the journey towards change by having input into the process.

At SANFL supporter level that is simply not happening.

After all most SANFL people get how having all their players together will be beneficial to both our AFL clubs.

In what is quite a complex debate this is not the issue in dispute

Whilst accepting the need for Reserves sides they just don't want the integrity and status of their beloved SANFL trashed in the process.

What remains unresolved is how to best introduce these sides in a way that benefits the rest of the South Australian football community

It looks like that still requires some work.

The Crows may be "The Pride of South Australia" but they are not all there is to South Australian Football.

To make this work, for all parties, they need to learn this lesson.

Phil Herden
FOOT-e TIMES SA



THE FOLLOWING ANNOUNCEMENT MIGHT JUST MAKE YOU CHOKE ON YOUR MORNING PIE FLOATER

VICTORIA HAS OVER 500 SQUARE MILES OF SOUTH AUSTRALIAN LAND.

Yep, your calculations are correct. That's over 1420 square kilometres by the metric system. See, the reason Victoria has all this land is because the state border line was marked incorrectly way back in 1850.

Don't flip through to the sports section just yet though, because it gets worse. As you can imagine, South Australia tried to get their land back.

They sued Victoria (before suing was trendy) and even threatened invasion. Then in 1914, after more court hearings than Julian Assange, Victoria won the case and got to keep the disputed territory. And the whole town of Serviceton along with it.

Imagine that, one day you're South Australian, the next, you're Victorian. It's just not right. It's outright un-South Australian. Just think of all the people who've missed out on everything that makes our state great.

Denied the majestic shimmer of the Maf's Balls. Unable to enjoy the culinary genius of a double cut roll stuffed with two types of meat. Deprived of the relaxed South Australian attitude (let's face it, the only time we get stressed is during Grand Final week). And worst of all, they've never known the simple pleasure of South Australia's number one beer, West End Draught.

UNTIL NOW. BECAUSE NOW, WEST END DRAUGHT ARE RECLAIMING THE LAND.

We're bringing South Australia back to this 500 square mile strip of Victoria. No, we don't have permission. Yes, we might get yelled at. But as your mum never said, two wrongs can make a right.

SO COME ON SOUTH AUSTRALIA, HELP US GET THE LAND BACK FOR ALL SOUTH AUSTRALIANS TO ENJOY.





4 GAME HOME MEMBERSHIP

\$45.00!!

INCLUDES:

- HOME MATCH TICKET
- GENERAL MEMBER ENTITLEMENTS
- 10% OFF MERCHANDISE

4 BLOCKBUSTER GAMES!!

**FRIDAY
5TH JULY**



**SATURDAY
27TH JULY**



**FRIDAY
2ND AUGUST**



**SATURDAY
24TH AUGUST**



**WEEKEND
SAT 7TH SEPT**



GET YOURS TODAY!!

CALL 83626278 OR GO ONLINE @

<http://premier.sportsubs.com.au/sanfl/nfc>

FEATURE STORY



MY LEFT FOOT *By Don Cooper*

Inspired by Australian director "Baz" Lurhmann's recent re-make of the 1974 silver screen sensation, "The Great Gatsby", I set to work on compiling a 21 member star studded cast (plus two understudies) for the SANFL's very own venture into feature films – a recreation of the 1989 drama "My Left Foot".

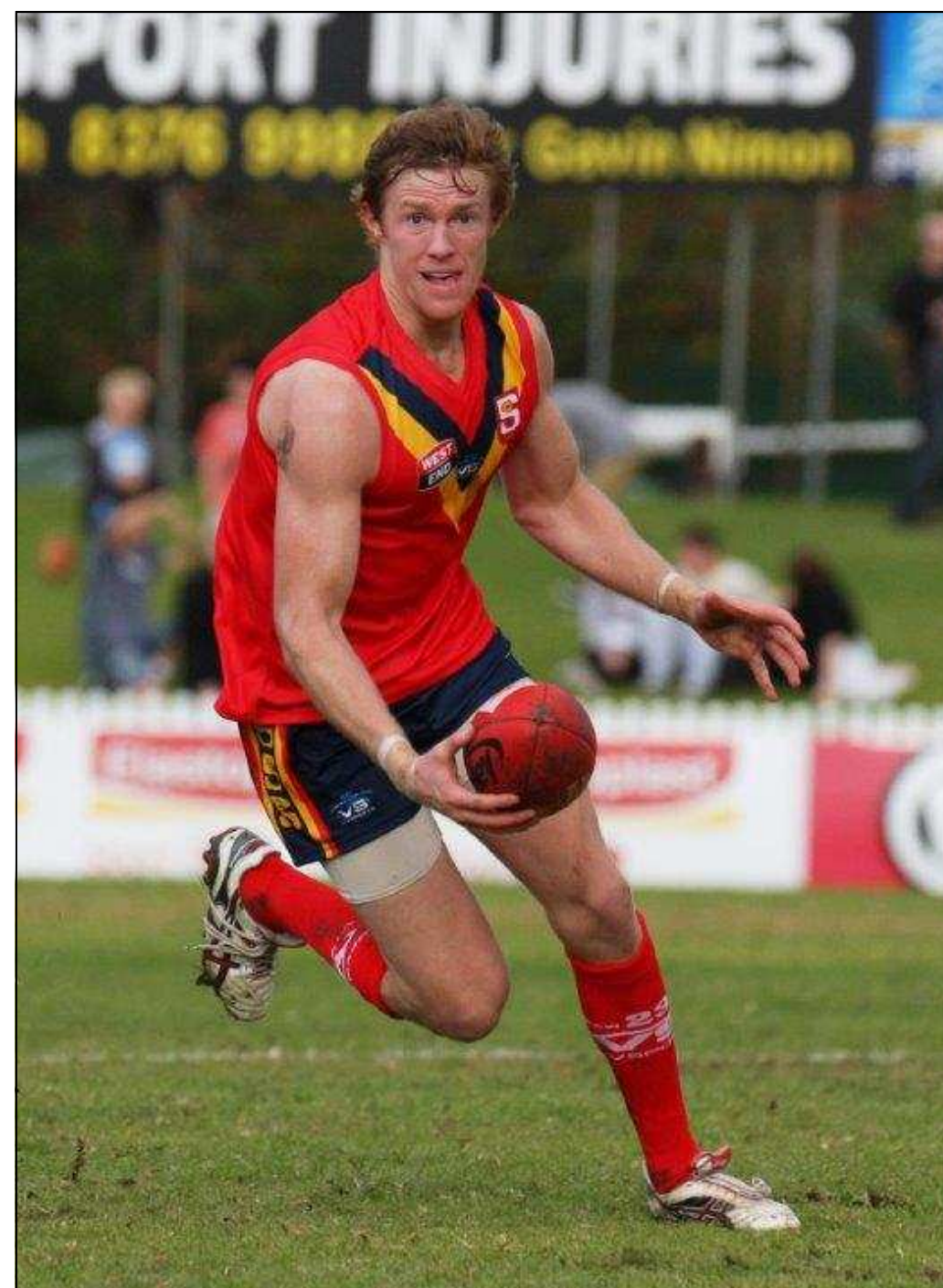
But just so I don't start this article off on the wrong foot, reflect on this for a moment if you will. Is there really any better sight during a SANFL match than seeing a natural left foot player wheel around onto their preferred leg of disposal, wind up with a characteristic launch style and send the Burley into orbit with a sweetly timed kick?

There's just something captivating and sublime about how these players adapt to being somewhat left of centre, so imagine how damaging an entire side of them could be! Well, look no further as in this feature article we take a look at some of the best in the business, and formulate what I believe would be my starting line-up for a team which consider a kick with the right foot would very much be the left!

However, having perused the lists of each club to source out my candidates, it became quite apparent there are a plethora of players with left-side laterality, making the task of selection more difficult than first thought

and forcing an unlucky few to be just plain left right out!

Starting with the back six, let's have a look at how my side would ideally take to the park.



Eagles & State VC

Luke Jarrad

Images : Peter Argent

0411 178 444

"TWO OF A KIND"

The 244-page book on the Gowans Twins

**Controversial.
Competitive.
Adored.
Despised.
Entertaining.**

Identical twins Chris and James Gowans were a lot of things but most of all they were huge characters in Central District's record-breaking 21st century dynasty, the pair leaving an indelible imprint on the SANFL after arriving in South Australia in 2000.

Now that the identical competitors have retired, it is time to lift the lid on their journey, to be recounted in print, with the upcoming release of Two of a Kind, the story of Chris and James Gowans, to be launched at their adopted home, Playford Alive Oval, on April 13, prior to the blockbuster night match between the Bulldogs and reigning premier Norwood.

Written by Central District supporters and freelance journalists Robert Laidlaw and Steve Barrett, Two of a Kind will be a must-read for all Bulldog fans, and those from other persuasions.

**LIMITED
PRINT RUN
SO ORDER
NOW**

Call the CDFC on 8255 2555 (office hours)

Or visit the Bulldogs Shop
www.cdfc.com.au/bulldog-shop/
and buy online

Books are \$30 each
(Plus \$10 Postage or can be picked up)



**Exclusive recollections on the life
and football journey of
huge characters and equal all time
SANFL Premiership Record Holders**

**A BOOK FOR ALL
SOUTH AUSTRALIAN
FOOTBALL FANS**



FEATURE STORY



**Back Pocket
7 - Fraser Evans
22 yrs, 191cm, 95kg.**



In recent times, we have seen an attacking side to the Double Blue's rangy defender, with coach Seamus Maloney opting to pinch hit the 22 year old up forward, but for mine, he rates more highly as a rebounding backman who can not only take a tall forward, but a strong mark as well.

Elevated to the Double Blue's leadership group this season, Evans also proves a capable deputy for Joel Tippett with the capacity to float across the last line of defence - and with a thumping kick at his disposal, the former State Under 16 and Under 18 player will ensure the danger area is cleared with authority.

**Full Back
12 - Joel Tippett
24 yrs, 197cm, 95kg.**



Since moving south during the summer of 2011/2012 the former Gold Coast Sun has certainly made himself at home in the heat of the SANFL competition and to me, is the obvious choice to underpin my defensive unit.

The 24 year old's combination of strength and athleticism is a key factor in being selected to tend the defensive goal square, and has proved an imposing adversary for any of the competitions spearheads.

As part of one of the best defensive sides in the competition - second only to the Redlegs in capacity to limit opposition scores - Tippett continues to stand as a pillar of strength in the Blood's line up.

**Joel Tippett
Images Peter Argent
0411 178 444**

**Back Pocket
34 - Josh Glenn
19yrs, 179cm, 77kg.**



The teenager made his return to the SANFL this season after a brief hiatus in the Amateur League last season.

A former State Under 18 representative, Glenn's amazing poise, balance and skill is well above his tender age and surely must be destined for the elite level in the not too distant future.

Highlighted by his two goals in Round 15 against the Panthers, Glenn is also capable of playing up forward, but in my side has been given the role as an attacking defender, with the scope to work both inside and outside of the defensive 50 to generate forward momentum.

Gifted with wonderful leg speed and a high performance engine, Glenn has the capacity to cover ground with seemingly consummate ease for four quarters which makes him incredibly hard to match up on and contain.

**Half Back Flank
3 - Tom Fields
20yrs, 192cm, 93kg.**

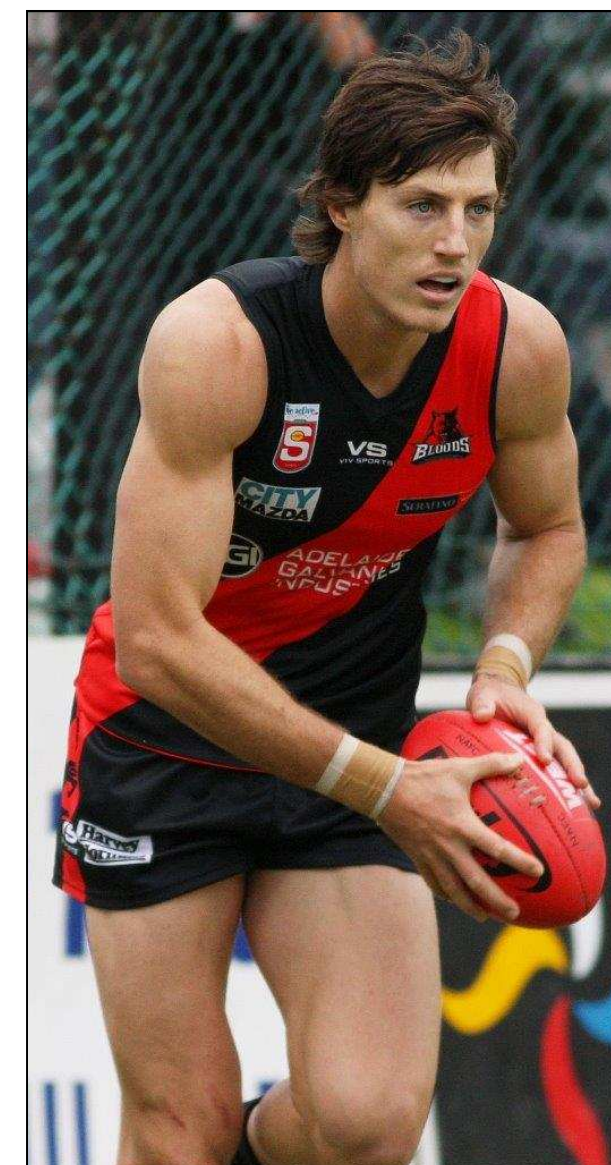


Since making his debut for the Panthers in Round 1, the former AFL Queensland State Under 18 player has gone ahead in leaps and bounds in regards to his standing as a consistent performer at SANFL League level.

It was a case of third time lucky for the Panthers, with their first two attempts to clear Fields from his previous club, Labrador - perhaps explaining his innate ability to retrieve the football so well - being denied.

Fortunately though, South Adelaide was able to secure his services and their efforts have been well and truly repaid by Field's performances to date.

His ability to run and carry the ball turns defence into attack, and he is the type of player who will cause real damage off a half-back-flank.



MATCH DAY AT THE BAY



GLENELG VS EAGLES

SATURDAY AUGUST 3

2.10PM GLIDEROL STADIUM, GLENELG

ENJOY SATURDAY FOOTY AT THE BAY!



MATCHDAY SPONSOR



FEATURE STORY



Centre Half Back - 13
Kieran McGuinness
30yrs, 189cm, 87kg.



The Redleg skipper really needs no introduction, being a player renowned for letting his actions do all the talking – and for this quality, along with his uncanny ability to read the play and be a true defensive general, also earns him the esteemed captaincy of the elite left footed side of season 2013!

The 2011 club champion is the pivotal force in defence and - much like a chess master - is the best in the business at ensuring the back six is organised to a precise plan.

As a player who leads by his own example and expectations, McGuinness is a commanding individual with precise skills and while he was unable to lead his team to a premiership last season following knee surgery, is on the right path to set the ledger straight in 2013.

Half Back Flank
10 – Ben Macreadie
25yrs, 180cm, 85kg.



One of the toughest players in the Blood's outfit, Macreadie is the perfect player to stand strong alongside McGuinness in the role as a rebounding defender, particularly given his penchant for taking on the opposition with hard hitting, straight line running!

There are not too many players who are capable of derailing this left footed locomotive once he gets up a head of steam, and given the fact he leads West Adelaide's list in terms of disposals via the lower limb is testament to his standing in the competition.

Along with his ability to take a strong mark, Macreadie is an easy selection in a side which proves difficult to finalise, providing some real grunt across the defensive expanses.

Centre Wing
3 - Luke Jarrad
29yrs, 186cm, 83kg.



If you need a Super Hero in your side, then look no further than Luke "Flash" Jarrad, with his flashy appearance – namely those flaxen locks and dashing white boots - matching his flashy style which leaves little wonder as to how his nickname was derived.

Season after season, the "veteran" of over 160 SANFL League appearances has dazzled his fans and opposition players alike, constructing attack after attack from the outer expanses of the grounds and quite literally proving to be one of the Eagles' strongest wings.

His ability to provide a conduit from defence to offence is priceless and makes him an invaluable commodity to this side.

Centre
8 – Mitchell Grigg
20yrs, 180cm, 85kg.



With his Round 14 performance against Glenelg having been described by Crow's dynamo Patrick Dangerfield as "unbelievable", it is little wonder the Redleg youngster takes his place in the very heart of the field.

Named on the interchange bench for the 2011 Under 18 All Australian side, Grigg has continued to develop into quite a complete player at SANFL level with the ability to win the hard ball, but also capable of adding the finishing touches to forward forays.

With an incredible engine, the youngster can not only demoralise opponents with his skill, but also run them into the ground!



Mitchell Grigg
Images Peter Argent 0411 178 444



EAGLES COMMUNITY WEEK

ROUND 16 EAGLES VS CENTRALS Sat 20th July

ROUND 17 EAGLES VS STURT Sat 27th July

Maughan Thiem Hyundai Oval - Oval Avenue Woodville South

Reserves 11:20am : League 2:10pm

Game Day Lunch 12:00pm–2:00pm, \$65pp
Bistro 5:00pm– 8:00pm - Presentations from 6:00pm

Jumping Castle & Face Painters, Community Displays & Kids Treasure Hunt
Eagles Function Centre Bar : BBQ : Canteens & Bars
Merchandise & Giveaways



Eagles Community Week
is proudly supported by
The City of Charles Sturt



FEATURE STORY



Centre Wing
33 – Scott Lewis
26yrs, 185cm, 90kg.



Prior to having his trademark hair-style vastly amended, the Eagle's Scott Lewis was quite literally one of the competition's most "dreaded" players to stand, but even with his more streamlined appearance above the shoulders, the 26 year old can still strike fear into an opponent with his sheer presence.

Let's be honest, it would be easier to charge into a cement rain water tank than try and tackle Lewis at full steam with the Burley in his grasp!

And if his tattooed frame could be considered dangerous at the very least, then his left leg must be considered a lethal weapon.

A clean striker of the ball, Lewis can deliver heat seeking missile passes and is equally capable of converting a long bomb.

Half Forward Flank
42 – Cohen Thiele
24yrs, 178cm, 75kg.



If you could select any player to hand the ball off to inside 50 and entrust them to apply the finishing touches with a goal, then you couldn't go past the Rooster's Cohen Thiele.

As a player who is well respected within the competition itself, it amazes me how Thiele consistently finds open space inside 50, affording him the composure time to convert opportunities more often than not.

It is this David Copperfield ability to be in one place one minute and gone the next which makes him such a difficult customer – and such a required player for my side.

Even outside his range, the young Rooster can still cause damage with his ability to lift the eyes and deliver to the best option up field.

Centre Half Forward
26—Ruory Kirkby
27yrs, 189cm, 82kg.



As one of the most agile, athletic and acrobatic forwards going around, the Tiger's vice-captain is definitely deserving of his place as a key forward target in this side.

While not in the traditional mould of a centre half forward, I see him more as a lead up player capable of using his aerial ability in the space surrounding the top of the 50 metre arc.

While his goal scoring range is best from 35-40 metres out, he can also do damage from further out with his ability to find a target closer to goal.

As a very mobile player, Kirkby can drag an opponent around all day, but also has the strength to win a one on one contest – and his ability to take the spectacular mark goes without saying!

Half Forward Flank
23 – John McDonald
23yrs, 185cm, 83kg.



Since making his new home at the Panther's den, the former Sturt utility has taken his game to another level, playing with a new found freedom and confidence.

While not recognised for his set shot capability, McDonald's most damaging asset is in providing a precise transition between the centre of the ground and the attacking zone, ensuring his forwards receive quick and efficient delivery – an attribute which can expose even the best defenders in the competition.

But it's his own defensive skills which help to earn him a place in this side, demonstrating an ability to apply pressure through great closing speed and tough tackling to keep the ball in the forward area – and create the turnovers through which vital goals are scored.



John McDonald
Images Peter Argent
0411 178 444



FEATURE STORY

Forward Pocket
4 - Taite Silverlock
22yrs, 179cm, 80 kg.



Pound for pound, there are not many tougher players in the SANFL than the Blood's Taite Silverlock.

With a name which would not be out of place in Hollywood, the diminutive forward is definitely one of the stars of the SANFL, being a high charged, high impact player who can tear a side to shreds off his own boot – both in general play and around the goal face.

His ability to deliver a knockout goal off one step is a factor which sets him apart from others, let alone his control at speed when allowed some space.

It's that strength, speed and skill which makes him such a difficult opponent to contain, and although troubled by a recent hamstring injury is clear to take his place in the side.

Full Forward
9 – Daniel Stewart
24yrs, 199cm, 85kg.



While he may not quite average two goals per match, the Rooster's Daniel Stewart still rates as the right player to have in the goal square for this side.

As a tall target with telescopic reach, his scoreboard returns have only been limited by opportunity, floating between duties for North Adelaide and the Power, but as far as return on investment goes, Stewart is still very much a profitable proposition up forward.

Capable of taking a big grab, or at the very least bringing the ball to ground for his small forwards, he can also kick a bag on his day, highlighted by a five goal haul against Sturt in Round 12.

That day, he earned 23 disposals and 9 marks, reminding all and sundry of his true capabilities.

Forward Pocket—29
Matthew Goldsworthy
22yrs, 177cm, 74kg.



Within the forward 50 zone, young Eagle Matthew Goldsworthy is certainly a force to be reckoned with, averaging over a goal per match in his career to date.

Amazingly, the boy from the CMS Crows commenced his SANFL League career back in 2008, securing a League premiership medalion in 2011 and all being well, will play his 100th League match for the Eagles in 2014 at just 22 years of age!

His value as one of the competition's elite small forwards was underlined with selection in the victorious West End SANFL State Team which defeated the NEAFL in May.

Ruck
30 - Brady Dawe
24yrs, 198cm, 92kg.



The boy from Meadows has come a long way on his football journey and as far as mobile ruckmen go, the rangy Redleg has no peer in the competition.

With the ability to provide a dour contest at each aerial joust, along with his capacity to drift both forward and behind the play when required, Dawe brings much more to the game than just his rucking ability - and for this reason gets the nod as the side's starting ruck just in front of Bulldog's big man, Seb Guilhaus.

Strong above his head, the twenty four year old's game sense is maturing with every season and given his progress to date will undoubtedly develop into one of the SANFL's most dominant big men in years to come.



Daniel Stewart
Images : Peter Argent
0411 178 444

FEATURE STORY



Follower
47 – Brayden O'Hara
25yrs, 181cm, 80kg.



With an unyielding attack on the ball and leg speed to burn, Brayden O'Hara is a game breaker on his day, capable of turning a match on its head in the blink of an eye which makes him a potent force in the on-ball brigade.

Strong in close and almost unstoppable on the run, O'Hara is an extremely adaptable player whose aerobic capacity allows him to play all over the ground for the full 80 minutes, a feature which helps him create space from stoppages time after time.

There are not too many better kicks on the run than the 'Dogs' number 47 and whether it be delivering to a team mate, or shooting for goal, he is equally reliable.

Rover
5 – Ian Callinan
30yrs, 171cm, 74kg.



In the hustle and bustle of stoppages, where it is tough in the clinches and only the strong survive, then you literally can't go past having a Bulldog in the mix!

Dangerous in packs and dynamite around goal, Ian Callinan has the skill and nous to make the most of every opportunity, complete with the ability to not only earn the hard ball, but a great awareness at ground level to ensure each disposal is to his side's advantage.

The pint-sized, pocket rocket has a sixth sense of where the goals are and with the ball in his hands and within range, he more often than not converts his opportunities, highlighted by his 174 goals in 92 outings with the 'Dogs.

Brayden O'Hara
Images Peter Argent
0411 178 444

Interchange
9 – Ben Newton
20 yrs, 183cm, 84kg.



Since transferring from West Adelaide earlier in the season, Ben Newton has looked right at home in the black and white jumper and seems to be developing nicely now he is established full time at Alberton.

The twenty year old has seen plenty of training time on the deck with the Power since being picked up at pick 35 in the 2010 AFL draft, but is yet to make his debut in a jumper with the teal trimming.

In the meantime though, Magpie fans are quite happy seeing the dour utility/ forward continue to add extra spark through the mid-field, and he has also shown the capacity to apply the finishing touches in front of goal.

Not one to take a backward step in a contest, his qualities fit right in down at the Port and provide another dimension to my squadron

Interchange
1 – Seb Guilhaus
25yrs, 198cm, 106kg.



Standing like a man mountain and with a palm seemingly the size of a baseball glove, Central District ruck man, Seb Guilhaus is quite literally a handy man to have in regards to providing first use of the ball to the on-ball brigade.

Averaging just over 29 hit outs per match, Guilhaus has re-emerged from obscurity this season to be classed as one of the League's best big men.

After being enticed by the 'Dogs to return to League football from the Southern Football League, the former Tiger and Eagle has reignited his career under the watchful eye of coach, Roy Laird, and is living proof that good things come to those who wait.

And while not renowned for his ability to dispose of the ball by foot with just three career goals, Guilhaus' tap work makes him worth his weight in gold!





a night at the Races

SOUTH ADELAIDE FOOTBALL CLUB GALA AUCTION

WHERE: The Peter Darley Function Room

DATE: Saturday 7 September

TIME: 6:30pm for a 7pm Seated

COST: \$90

DRESS CODE: A Night at the Races

Book Now!

Call: Theresa or Kristie on 81868200

Email: reception@safc.com.au

The Gala Auction is South Adelaide Football Clubs Major Fundraising Event of the year, with vital funds raised helping the club to continue to enhance its junior and senior football programs, and its community programs.

Enjoy a night of gourmet dining and first class entertainment. There will be an array of exciting items up for grabs!



Visionary | Can-Do | United

FEATURE STORY



.Interchange
27 – Sam Shaw
22yrs, 191cm, 87kg.



As a sizeable defender/ utility, Sam Shaw can play a number of roles on the ground and for this reason earns himself a place on the interchange bench, affording a number of options to bring his talent to the fore.

The young Tiger is still developing and maturing as a player, but shows all the signs he is a class act in the making.

A strong mark and thumping kick of the ball, Shaw can launch the ball from defence with devastating distance and against sides who remain intent on zoning inside their attacking area, he is certainly a player capable of well and truly clearing those and creating opportunities further afield.

Emergency
2 - Lewis Hender
19yrs, 187cm, 88kg.



Struck down by an untimely season ending knee injury in the Round 8 clash against the Eagles, the dashing Tiger forward looked set for a breakout 2013 following outstanding performances in the early rounds, but as luck would have it – and all bad indeed – we will have to wait for 2014 to see Hender truly stamp himself on the competition.

Just by the way he takes the game on, one gets the feeling he really is something special waiting to happen and has a habit of turning half chances into miraculous moments, invariably filling the highlights reel with sensational goals from incredible angles.

Peter Rolfe
Images Peter Argent
0411 178 444

Emergency
17 – Peter Rolfe
24yrs, 182cm, 90kg.



Yet another talent to be sidelined through knee injury, the Panther's Peter Rolfe had his season curtailed following the Round 4 victory over the Double Blues, requiring him to spend his 24th birthday in a hospital bed recovering from reconstructive surgery.

Rolfe is an integral component of the Panther's forward structure and his radar around the big sticks is invariably set for maximum damage, with 119 goals from his 78 matches in the navy blue guernsey to date testament to his value.

In addition, Rolfe's speed and strength in a contest is a real asset and no surprise he was a front runner in the SANFL's Powerade Challenge prior to his injury.

So there you have it, my "Left Foot Legends" for season 2013. A side with plenty going right for it (other than their preferred kicking leg!) and more stars than the milky way - and a side which I'm sure would cause any other team the odd headache or two!

And while there are a number of players who can be considered extremely unlucky to have missed the squad this year, in particular Matt Fuller (Norwood) and Pat Giuffreda (Woodville-West Torrens) to name just two, we can continue to marvel at the brilliance of them all each and every week of the season, turning their opponents inside out and weaving their way with wizardry through traffic from left to right.

Well, from right to left to be exact!

Don Cooper





PREMIER SANFL COVERAGE

Listen Live on the Web www.rphadelaide.org.au

ROUND 17

1.30PM SATURDAY

PORT

v GLENELG

2.00PM SUNDAY

NORTH

v SOUTH

BULLDOG BULLETIN

Club Web Site : www.cdffc.com.au

Guys in Ties, Girls in Pearls Gala Auction Dinner on 27th July 2013 from 6:30pm.

Featuring Comedian "Gerry O' & Musical Duo "Simply By Chance" - Includes 3 Course Meal, Beer Wine & Soft Drink, 20 Main Auction Items and 150 Silent Auction Items + Grange in the Range. Held in the Holden Room, Grand Central Tavern, Goodman Road, Elizabeth 5112.

Contact the Club on 8255 2555 by July 19.

CDFFC Cocktail Ball on 24th August 2013 from 8pm till late.

Held in the Holden Room, Grand Central Tavern featuring live music from 'Keep the Change'. \$30 per person includes cocktail food with drinks available at the bar.

Contact the Club on 8255 2555.



BULLDOGS
CENTRAL DISTRICT FOOTBALL CLUB INC. SANFL

ROAD AHEAD

Rd 18 v NORTH (SatA)

Rd 19 @ Port (SunA)

Rd 20 v WEST (SatA)

Rd 21 @ Norwood (SatA)

Rd 22 v GLENELG (TBA)

WHAT WE LEARNT



WHAT WE LEARNT

Peter Argent

Central and Port are in their right places on the ladder.

On the Bulldog's performance last Saturday at Woodville Oval, they are where they should be. In the middle of the pack.

Roy Laird has produced most probably his best season's performance as a coach since he started at League level a decade ago.

They have some exciting young talent in Josh Waldhuter (Hell he's tough), Josh Glenn and first gamer Jake Martin and have blooded a number of young talents over the year.

A Finals appearance will be a good effort by this new look side.

While the Port Adelaide fade out was a concern, the result against North proves they can't consistently compete against the top four sides.

How cold was it last Saturday?

Understanding we play a winter sport, and granted the sun was out for most of the afternoon, it was still one of the coldest days of football I have watched.

Having played for Eudunda in the mid north, I reckon I understand cold pretty well.

One day in the 1980's I had the pleasure (?) of playing when it snowed in that town!

Those stats can't be right.

From the Champion Data stats on the weekend came some amazing numbers – which seem

Foxtel Cup Action

Images Peter Argent 0411 178 444

unbelievable.

The Riley Knight story is sensational. He was dropped by coach Shane Grimm for the 2012 Under 18's Grand Final, that the Eagles won.

This year he has made every post a winner, and played every game of the Under 18's National champs, winning plaudits from many critics.

Against Central District in the Under 18 match at the Ponderosa he had 43 possessions, including 26 kicks, took 12 marks and laid five tackles.

He also won seven clearances and for good measure kicked a goal in the side's 42 point win.

His efficiency of disposal was at 80 per cent. At the other end of the scale, 150 game SANFL footballers, Glenelg captain Ty Allen and Ruory Kirkby collecting four and three possessions respectively.

Defies belief, unless they were both injured and didn't play much of the

game against South.

West Adelaide can win the Foxtel Cup

This may be Andy Collin's, coupe de grace.

The Bloods will have a tough challenge from East Fremantle, but can win the Foxtel Cup.

Travis Tuck must be the player of the series at the moment after two strong performances at the MCG and against Claremont.

It will be helpful for all concerned if the weather conditions on August 6 are a little better than the current ones.

Who is the toughest footballer in the SANFL?

Pound for pound Brayden O'Hara must be up there! He doesn't take a backward step, runs hard all day and is always at the contested ball. He is also finding plenty of the ball this year.



Tom Zorich
Your Liberal Candidate for Wakefield

Email: tom.zorich@saliberal.org.au

Phone: 0418 967 424

www.liberal.org.au



Hope.
Reward.
Opportunity.

Authorised by G Greene, 25 Leigh St,
Adelaide SA 5000.

WEST ADELAIDE FOOTBALL CLUB GALA AUCTION DINNER



Christmas in July

SATURDAY 27TH JULY 2013

HELD AT THE WEST ADELAIDE FOOTBALL CLUB,
"WINTER WONDERLAND" BALLROOM

TIME: 6:30PM - MIDNIGHT

DRESS CODE: CHRISTMAS THEME

COST: \$65 PER PERSON, INCLUDES 3 COURSE MEAL

- MAJOR & SILENT AUCTION •
- LIVE DJ • FULL BAR FACILITIES •
- OVER 100 AUCTION ITEMS TO BID ON •
- HOSTED BY ROB POPPLESTONE •

RSVP BY FRIDAY 19TH JULY ON 8352 4022 OR EMAIL
GINA.CIMAROSTI@WESTADELAIDFC.COM.AU

WHAT WE LEARNT



Don Cooper

1- yelruB.

If you're wondering what the first word of this sentence is, then allow me to explain.

It is simply Burley written backwards, and is what would have been imprinted on the palms of South Adelaide ruckman Daniel Bass after his Trojan like effort against the Tigers at Hickinbotham Oval on Saturday afternoon.

In conditions less than conducive for a 198cm, 100kg player – let alone facing the Tiger's tandem towers of Warrick McGinty and Lachlan Button all day – the Panther giant racked up a quiet 50 hit outs in a match which had more stoppages than a Union worksite!

Bass was the instigator in supplying the likes of Joel Cross (10 clearances) and Caleb Daniel (8) on a day which saw South Adelaide take the valuable two points and the prized Carey-Darley Cup.

And let's not forget that victory gave the Panthers their third successive win at home, which may have just lifted Hickinbotham's House of Horrors curse on the club!

2- Any Port in a storm?

Well, on such a winter's day as Saturday was one may have thought it would well be the case, but the Magpies were given a taste of their own tonic

as the Roosters redeemed their Round 8 loss in style with an emphatic 73 point victory in front of their faithful supporters at Prospect Oval.

That defeat is the Magpie's third in succession and places them in a very precarious position as far as making the Finals now, still two wins out of the five and with a resurgent South Adelaide breathing right down their neck.

From their perspective though, the Magpies would be grateful for the Eagles taking the points over Central District, a result which still keeps the flickering flame of hope alive, but Ken McGregor's men certainly need to start taking matters into their own hands and put some wins

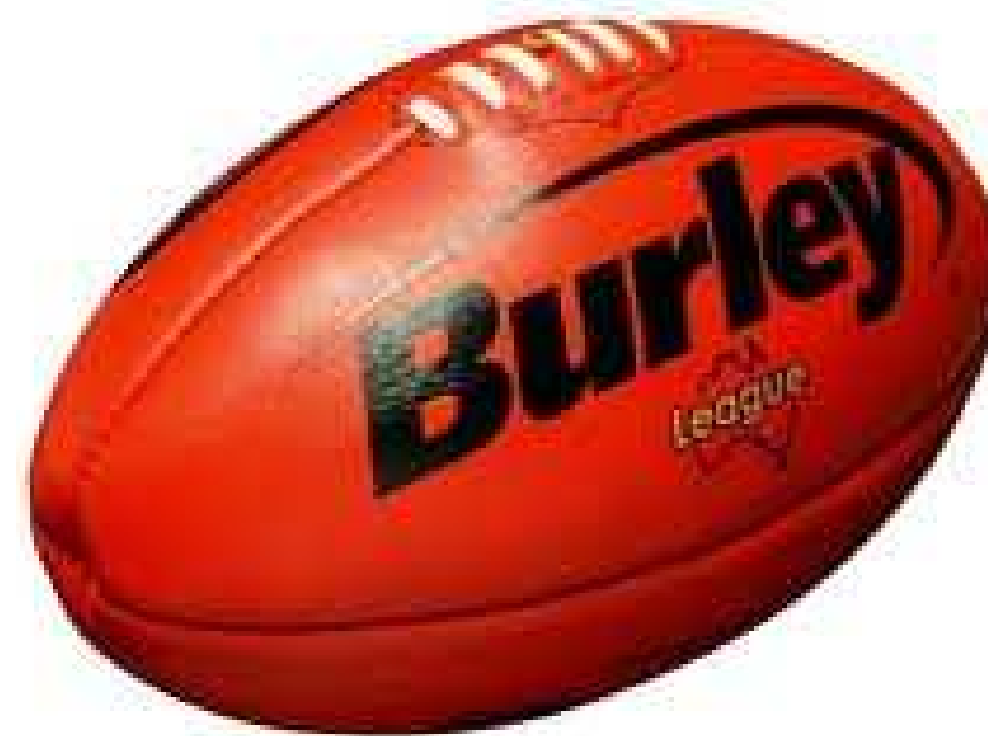
on the board.

3- They say flattery will get you everywhere, but it won't help Glenelg!

The Tigers were flattered by suffering just a 23 point losing margin at Hickinbotham Oval on Saturday afternoon, and have some real work to do if they are to even consider chalking up another win in season 2013.

On a day when they lost the Carey-Darley Cup, they gained the wooden spoon for mine and hopefully Kris Massie may be able to use this to mix together a recipe for success for 2014.

(That is assuming he retains his place as the chef!)



STURT FOOTBALL CLUB MEMBERSHIP 2013

Being a supporter is great but the best way to support your Club is by being a member. You can sign up online at www.sturtfc.com.au or call us 08 8272 1501 for all your membership and ticketing needs.

BLUES BASE – \$66.00 (Concession \$60.00)

- SFC/UCSC Membership
- 2013 Members Sticker
- Membership Card (1st Year of Membership)
- 2013 Members Badge
- 10% Double Blues discount voucher towards item at merchandise van
- Voting rights for the SFC & USCS
- Members Email
- Exclusive access to SFC website members area
- Annual Report
- Sponsors Member discount offers throughout season

UNLEY THREE GAME PACKAGE - \$88.00 (Concession \$77.00)

- Blues Base Membership Plus
- Entry to three Unley home games.
- Grand Stand Pass

TRUE BLUE - \$155.00 (Concession \$148.00)

- Blues Base Membership Plus
- 15% Double Blues discount voucher towards item at merchandise van
- Entry to all 10 Home Games
- Home Grand Stand Pass

TRUE BLUE SEASON - \$195.00 (Concession \$183.00)

- Blues Base Membership Plus
- 15% Double Blues discount voucher towards item at merchandise van
- Entry to all Home and Away Games
- Home Grand Stand Pass

VICE PRESIDENTS - \$600.00

- Blues Base Membership Plus
- 15% Double Blues discount voucher towards item at merchandise van
- Exclusive VP Scarf (1st year of Membership)
- Exclusive VP Key ring
- Half time VP function (Home games)
- 2 Season Tickets
- 2 Grand Stand Passes
- Car park at Unley Primary School
- Invitation to two Corporate Breakfasts
- In season meetings

PLATINUM VP - \$1750.00

- Vice Presidents Package Plus
- Breakfast with the Coach
- 1 PT Morton Medal Ticket
- 2 Gala Auction Dinner Ticket

Major Sponsor

**CLARIDGE
HOLDEN**
driving ahead.



WHAT WE LEARNT



John Nankivell

Redlegs and Roosters the standouts.

Despite the Foxtel Cup heroics of the Bloods, the two standout teams in the SANFL at the moment are Norwood and North Adelaide.

These sides proved this on Saturday afternoon with comprehensive victories over their respective opponents.

After a close first half the 'Legs ground Sturt into the Unley oval mud in the second half of their clash on Saturday afternoon, and ran out winners by 46 points.

Meanwhile at Prospect the Roosters also endured a close first half, before kicking 12.3 to the Magpie's paltry four behinds after half time to record a 73 point win.

The two teams deserve their current spots at the top of the table, and I feel their clash at the Parade in Round 23 might just be the Grand Final preview.

The top five is almost set.

It is hard to see the current make up of the top five changing in the remaining seven weeks of the home and away season.

Ladder positions may change,

It was hard, wet & rugged football @ Woodville on Saturday
Images : Peter Argent
0411 178 444

but I feel the five teams who will be involved in the major round action are all but set. Central will finish fifth, with the greatest interest being who they will meet in the Elimination Final.

The Eagles are a real chance of taking third spot this week, and their battle with West over the remaining weeks of the season, to see who gets the double chance, will be intriguing.

Norwood and North will both get the double chance, with the Redlegs the favourite to take out the minor premiership.

Of the teams outside the five only Port Adelaide have a realistic chance of making it. But I fear they will be coming from too far back.

The curse is lifted.

With their 23 point victory over the Tigers on Saturday, South Adelaide recorded their third straight home win at Noarlunga.

In doing so they showed that their Noarlunga hoodoo is well and truly over.

While we may never know what caused the Panthers to struggle so much at home in recent seasons, I'm sure it would have pleased the South faithful no end to be able to hear the theme song ring out around the ground again.

This season has been a tough one for the navy blue and whites, but hopefully their current strong home form shows that there is light at the end of the tunnel.





THE HOME GROUND OF GRASSROOTS FOOTY

www.safooty.net

Phil Aspinall

1. Amazing Aish

Returning to the 'Leg's senior side after a very successful stint with the State Under 18's team, young star in the making, James Aish, again showed why scouts have been salivating over the 2012 League Premiership player.

Aish was one of Norwood's best players in their away win over Sturt, in what were very trying wintery conditions.

The son of Andrew put in a superb performance to finish the day with 23 disposals, eight marks, six rebound 50's, two tackles, two inside 50's and an impressive three goals.

One of the best stats though was a classy contested mark, backing into on-coming traffic with the flight of the ball, which ended up being awarded the 'SANFL Mark of the Week'.

Despite an injury interrupted start to the year, young Aish is proving to be a very important cog in a solid Redleg's machine.

2. Goden's gutsy guys.

This time last week I was criticising the Eagles for the inconsistent form they have shown so far in season 2013.

This week, they deserve to be praised for the gutsy victory they had against the 'Dogs at Woodville last Saturday.

In what was a pretty entertaining and close encounter throughout the course of the day, the Eagles managed to hang on for a 12 point win.

Speaking to the winning coach, post game, it was revealed that the

home side had to deal with injuries to Chris Hall (thumb), Andrew Ainger (back), Angus Rowntree (groin), Jarred Allmond (knee), Craig Parry (head knock), while skipper Luke Powell and defender Patrick Giuffreda carried injuries into the game.

That made the win over the Bulldogs even more meritorious and keeps the Eagle's top three chances well and truly alive.

3. Schahinger shines

With the short term injury to former Crow's rookie ruckman, James Craig, and a preference to play Crow's forward, Lewis Johnston, in attack rather than in the middle, North Adelaide coach Josh Francou needed to bring in a big man against the Magpies that could get the job done.

Enter Hamley Bridge product, Justin Schahinger. Promoted to the senior side after some solid Reserves football, the strongly built big man was in for a tough day at the office, up against one of the best ruckmen in the competition in Port skipper, James Meiklejohn.

Schahinger more than held his own on the day, in what was a very

impressive League debut. Finishing with more hit outs and disposals than Meiklejohn, the Rooster's ruckman finished with 12 touches, five tackles, six clearances and a solid 45 hit outs.

4. Glenelg's gun gone.

Much has been mentioned regarding the disastrous last couple of months for the Tigers at League level, and that there seems to be a bit of external pressure being put on under performing senior coach, Kris Massie.

The Bays have lost nine games on the trot now and while Massie is working with a young side - that has some exciting juniors not only getting exposure at League level, but also performing admirably - it has been some of his senior players, well down on form, that need to seriously improve their output.

With perhaps the exception of midfielder, Jason Davenport, and mature age recruit, Ryan McInerney, the likes of key forward Ruory Kirkby and former captain Ben Mules have struggled all year, while current skipper Ty Allen has been a shadow of his former self in season 2013.



Cam Elli-s-Yolman
Images : Peter Argent
0411 178 444



WHAT WE LEARNT

Phil Herden

Unley Masterplan Unveiled

Way back in our pre-season issues we brought readers attending to consultations being undertaken by the City of Unley in redeveloping what is now Envestra Park.

A draft plan has now been released and if brought to fruition will certainly enhance the precinct.

Have a look via this link
<http://www.unley.sa.gov.au/webdata/reso...2013-1.pdf>

Canberra not the solution.

Advertiser Journalist Scott Walsh wrote an interesting piece last week about how the Swans reserves joining AFL Canberra (now NEAFL East) solved this issue and how all parties were winners so the SANFL should do the same.

Being fair click here for his article
<http://www.heraldsun.com.au/sport/afl/answer-to-sanfls-reserves-dilemma-spelt-out-in-capital/story-fni5f22o-1226682227820>

Alas a few things were omitted.

Firstly Sydney actually withdraw their whole reserves team from the 2000 AFL Sydney finals and even as late as 2012 had "interesting" omissions from their NEAFL East Grand Final side in which they were defeated by Queanbeyan in a massive upset.

He also failed to mention that, Weston Creek & Wagga both left soon after the Swans came in.

They will soon be joined by Tuggeronong who won't be in the NEAFL East next year, the first of many NEAFL clubs leaving according to this article in the Canberra Times.
<http://www.theage.com.au/afl/afl-news/canberra-clubs-in-gun-20130719-2qa86.html>

Grand finals not worth playing your best players in ?

Teams moving in & out like an AFL interchange bench?

Hardly a solution I want to see for the SANFL.

In all this AFL Reserves debate in the mainstream media there are few examples of the SANFL perspective.

An exception is this piece from Dion Hayman for In Daily called "Fight for the future of SANFL."

Click here to read it.

<http://indaily.com.au/opinion/2013/07/24/fight-for-the-future-of-sanfl/>

Dion is an author of many SANFL record books and describes himself as an SANFL tragic.... aren't we all?

AFL RESERVES SURVEY



WILL SANFL FANS WALK?

By Phil Herden

Two weeks ago as part of our special AFL Reserves series **FOOT-e TIMES SA** ran a SANFL fans survey on this issue.

Well the results are in and they should make most worrying reading for those contemplating the future of our competition.

Almost 600 of our readers took the time to answer our questions and if this number is anywhere near a real sample of SANFL club members then the league faces a large "walk away" factor if the Crows AFL Reserves side is introduced next year.

In summary

Almost one quarter (24.9%) of those who did the survey indicated they would walk away from their club in a Crows Reserves side joined the SANFL league competition.

In addition another 30.7% indicated they would lessen their attendance at games, some with a general reduction in support (12.9%), others a specific boycott of games against AFL reserves side (17.8%).

To illustrate the emotional nature of this debate only 40.2% advised that their level of support would be unchanged regardless of how things panned out.

For more information refer our "OVERALL RESULTS PAGE"

What colours will
Jarrad Redden be in next year?
Peter Argent 0411 178 444

Loyalty Losses

In a further concern these figures are even higher when you look at the most loyal supporters, those the most loyal supporters, those who attend more than 15 games a season, the fans that generate the most membership & game day income.

For starters, these people feel the most strongly on the matter, with 66.3% of respondents holding a home match or season ticket. (ie the membership categories that make the most profit for SANFL clubs).

In this grouping 26.7% advised ,,

they would walk away with a further 36.9% indicating a lessening of support. Only 33.7% would leave their level of support unchanged.

In contrast for those that didn't attend a game only 18.8% would walk from their club with a further 6.3% lessening their support.

This group is far more comfortable with change with 65.6% saying their level of support would remain unchanged.

For more information check our "BY GAMES ATTENDED PAGE"



THE GREATEST FOOTY CLUB RAFFLE OF ALL TIME

KEEPING SA FOOTY FOUNDATIONS STRONG

IGRA **maughan them** **Lifestyle SA** **VENTURE HOLIDAYS** **malaysia airlines** **Fairmont Homes** **Retirement living at its absolute best.** **7** **FIVEaa** **The Advertiser**



AFL RESERVES SURVEY

Club By Club

With the results received we arrived at a "Net Effect" figure by taking away all the "lessening support" answers from the "greater support" answers.

Glenelg had the highest Net Effect loss (-86%) but from a relatively small base of respondents.

However over 52% of all respondents came from 3 clubs, Norwood (20.4% of respondents), Central (16.1%) & North (15.6%).

Respondents from these clubs are some of the most opposed to AFL reserves with the following "net effect" results;

Norwood - 66% less support
Central - 60% less support
North - 57% less support

The results for each club follow.

At the other end of the scale, the Eagles (with a smaller sample size of 7.3%) at a "net effect" of 36% less support.

Then there is Port Adelaide.

Port & the rest

When results were broken up club by club, it became quickly clear that Port fans who took the survey thought quite differently.

Firstly compared with the other 8 clubs (the rest), only 20% of Port fans who did the survey attended 10 or more games in a year compared with 68% of the rest.

Also Port fans, who took the survey, are far more supportive of AFL reserves sides coming into the SANFL.

In relation to a Crows side coming in to the SANFL league competition 85.2% advised their support of the Magpies would either increase or not change.

Furthermore if the Magpies became in effect to Power reserves side the "net effect" would be 33% more support, compared with 58% less support for the rest.

It's hard to know exactly what to make of this difference except it looks like a decent proportion of the Port respondents were Power fans that only marginally support the Magpies but would embrace them more if they were the Power's reserves side.

For more information check out the "PORT AND THE REST PAGE."



Ian Callinan
Images
Peter Argent 0411 178 444



AFL RESERVES SURVEY

CONCLUSIONS

Is this survey accurate?

I hope not.

If AFL Reserves in the SANFL League became reality and these results proved an accurate prediction, then the competition would be decimated and have a probable level of support less than the WAFL.

The financial ramifications with loss of membership income along with a drop in attendances would be severe.

A case could be made that those who oppose change are more vocally active than those who almost silently accept it.

Hence it is likely that the "walk away" percentage is overstated, but by how much?

This is far from a scientific survey, however with it being directly targeted to SANFL club supporters and with almost 600 responses it is without argument the most comprehensive done so far.

Where to from here.

Last week in my editorial I strongly recommended that the SANFL undertake professional, scientific & proactive market research within its supporter base to gauge potential effects from AFL reserves inclusion.

It's hard to fathom any other business making such a fundamental change to its "product" without first getting such feedback from its "customers."

This survey indicates a massive

reduction in support will occur should AFL reserves become reality in the SANFL league.

This is a warning & it needs to be checked. There is too much at stake for it to be ignored.

If it takes some time and costs some money to get the correct information to make the right decisions so be it.

Secondly, if the AFL reserves become reality a lot of thought needs to be given by the SANFL & its clubs in how to retain its membership.

The double whammy of a new Adelaide Oval to entice crowds and large scale desertions due to introducing AFL reserves could make 2014 one of the most challenging yet for the SANFL.



Images Peter Argent 0411 178 444



AFL RESERVES SURVEY

AFL RESERVES SURVEY



OVERALL RESULTS



Which Club Do You Support?

Central District	16.1%
Eagles	7.3%
Glenelg	6.3%
North Adelaide	15.6%
Norwood	20.4%
Port	14.1%
South	5.5%
Sturt	6.3%
West	7.1%
None	1.3%

What is your Membership Category?

Not A Member	14.9%
General Member No Ticket	18.7%
Home Match Ticket	13.9%
Season Ticket Holder	47.3%
Player/Official	5.1%

How old are you?

13-18	1.3%
18-30	10.6%
31-45	43.2%
45-65	39.9%
65+	5.1%

How many games do you attend in a year?

None	8.6%
A few (1-5)	15.1%
Quite a few (6-10)	14.4%
Quite a lot (11-15)	14.1%
Almost All (16-20)	47.9%

How would the following options affect you?

	Crows reserves in SANFL League	Power reserves in SANFL League	Crows & Power in other league (VFL)
MORE likely to support my club (buy membership, attend more games)	4.6%	9.3%	15.1%
No change to my level of club support	40.2%	35.8%	70.3%
Attend same games against other SANFL clubs but not against AFL reserves	17.8%	16.8%	n/a
LESS Likely to support my club (not buy membership, attend less games)	12.9%	11.1%	4.9%
Walk away from my club altogether	24.5%	26.9%	9.7%
NET EFFECT	50.6% less support	45.5% less support	0.5% more support



BY GAMES ATTENDED



How would the following options affect you?

	Games Attended	Crows res in SANFL League	Power res in SANFL League	Crows & Power in other league (ieVFL)
MORE likely to support my club (buy membership, attend more games)	0 (51) 1-5 (90) 6-10 (88) 11-15 (84) 16-20 (286)	9.4 % 3.5% 3.6% 10.7% 2.7%	34.4% 15.8% 12.7% 8.9% 2.2%	6.3% 20.7% 14.5% 17.9% 13.8%
No change to my level of club support	0 1-5 6-10 11-15 16-20	65.6% 47.4% 43.6% 37.5% 33.7%	46.9% 40.4% 32.7% 37.5% 33.0%	56.3% 55.2% 60.0% 71.4% 80.3%
Attend same games against other SANFL clubs but not against AFL reserves	0 1-5 6-10 11-15 16-20	0% 14.0% 16.4% 19.6% 21.9%	0% 10.5% 12.7% 17.9% 22.7%	n/a n/a n/a n/a n/a
LESS Likely to support my club (not buy membership, attend less games)	0 1-5 6-10 11-15 16-20	6.3% 15.8% 7.3% 12.5% 15.0%	3.1% 10.5% 7.3% 8.9% 14.6%	6.3% 13.8% 7.3% 3.6% 1.6%
Walk away from my club altogether	0 1-5 6-10 11-15 16-20	18.8% 19.3% 29.1% 19.6% 26.7%	15.6% 22.8% 34.5% 26.8% 27.6%	31.3% 10.2% 18.2% 7.1% 4.3%
NET EFFECT	0 1-5 6-10 11-15 16-20	15.7% less support 45.6% less support 49.2% less support 41.0% less support 60.9% less support	15.7% MORE support 28.0% less support 41..8% less support 48.8% less support 62.7% less support	31.3% less support 3.3% less support 11.5% less support 7.2% MORE SUPPORT 7.9% MORE SUPPORT



AFL RESERVES SURVEY



CENTRAL DISTRICT



What is your Membership Category?		How many games do you attend in a year?		How old are you?	
Not A Member	14.1%	None	4.7%	13-18	-
General Member No Ticket	21.9%	A few (1-5)	14.1%	18-30	9.4%
Home Match Ticket	12.5%	Quite a few (6-10)	15.6%	31-45	26.6%
Season Ticket Holder	45.3%	Quite a lot (11-15)	15.6%	45-65	54.7%
Player/Official	6.3%	Almost All (16-20)	50.0%	65+	9.4%

How would the following options affect you?

	Crows reserves in SANFL League	Power reserves in SANFL League	Crows & Power in other league (VFL)
MORE likely to support my club (buy membership, attend more games)	6.3%	6.3%	17.2%
No change to my level of club support	27.0%	29.7%	71.9%
Attend same games against other SANFL clubs but not against AFL reserves	9.5%	10.9%	n/a
LESS Likely to support my club (not buy membership, attend less games)	19.0%	14.1%	6.3%
Walk away from my club altogether	38.1%	39.1%	4.7%
NET EFFECT	60.3% less support	57.8% less support	6.2% more support



EAGLES



What is your Membership Category?		How many games do you attend in a year?		How old are you?	
Not A Member	10.3%	None	3.4%	13-18	-
General Member No Ticket	10.3%	A few (1-5)	3.4%	18-30	20.7%
Home Match Ticket	17.2%	Quite a few (6-10)	13.8%	31-45	48.3%
Season Ticket Holder	62.1%	Quite a lot (11-15)	17.2%	45-65	27.6%
Player/Official	0.0%	Almost All (16-20)	62.1%	65+	3.4%

How would the following options affect you?

	Crows reserves in SANFL League	Power reserves in SANFL League	Crows & Power in other league (VFL)
MORE likely to support my club (buy membership, attend more games)	10.7%	10.7%	17.2%
No change to my level of club support	42.9%	42.9%	79.3%
Attend same games against other SANFL clubs but not against AFL reserves	14.3%	17.9%	n/a
LESS Likely to support my club (not buy membership, attend less games)	10.7%	7.1%	3.4%
Walk away from my club altogether	21.4%	21.4%	0.0%
NET EFFECT	35.7% less support	35.7% less support	13.8% more support

AFL RESERVES SURVEY



GLENELG



What is your Membership Category?		How many games do you attend in a year?		How old are you?	
Not A Member	4.0%	None	4.0%	13-18	-
General Member No Ticket	8.0%	A few (1-5)	4.0%	18-30	12.0%
Home Match Ticket	24.0%	Quite a few (6-10)	16.0%	31-45	52.0%
Season Ticket Holder	56.0%	Quite a lot (11-15)	12.0%	45-65	36.0%
Player/Official	8.0%	Almost All (16-20)	64.0%	65+	-%

How would the following options affect you?

	Crows reserves in SANFL League	Power reserves in SANFL League	Crows & Power in other league (VFL)
MORE likely to support my club (buy membership, attend more games)	0%	0%	20.0%
No change to my level of club support	16.0%	12.0%	76.0%
Attend same games against other SANFL clubs but not against AFL reserves	16.0%	20.0%	n/a
LESS Likely to support my club (not buy membership, attend less games)	28.0%	28.0%	0%
Walk away from my club altogether	40.0%	40.0%	4.0%
NET EFFECT	84% less support	88% less support	16% more support



NORTH ADELAIDE



What is your Membership Category?		How many games do you attend in a year?		How old are you?	
Not A Member	8.1%	None	3.2%	13-18	1.6%
General Member No Ticket	24.2%	A few (1-5)	17.7%	18-30	3.2%
Home Match Ticket	14.5%	Quite a few (6-10)	16.1%	31-45	48.4%
Season Ticket Holder	51.6%	Quite a lot (11-15)	11.3%	45-65	43.5%
		Almost All (16-20)	51.6%		

How would the following options affect you?

	Crows reserves in SANFL League	Power reserves in SANFL League	Crows & Power in other league (VFL)
MORE likely to support my club (buy membership, attend more games)	1.6%	0.0%	19.7%
No change to my level of club support	39.3%	41.0%	72.1%
Attend same games against other SANFL clubs but not against AFL reserves	13.1%	16.4%	n/a
LESS Likely to support my club (not buy membership, attend less games)	18.0%	11.5%	3.3%
Walk away from my club altogether	27.9%	31.1%	4.9%
NET EFFECT	57.4% less support	59.0% less support	11.5% more support



AFL RESERVES SURVEY



NORWOOD



What is your Membership Category?		How many games do you attend in a year?		How old are you?	
Not A Member	12.7%	None	5.0%	13-18	1.3%
General Member No Ticket	21.5%	A few (1-5)	15.0%	18-30	3.8%
Home Match Ticket	12.7%	Quite a few (6-10)	10.0%	31-45	45.0%
Season Ticket Holder	49.4%	Quite a lot (11-15)	17.5%	45-65	41.3%
Player/Official	3.8%	Almost All (16-20)	52.5%	65+	8.8%

How would the following options affect you?

	Crows reserves in SANFL League	Power reserves in SANFL League	Crows & Power in other league (VFL)
MORE likely to support my club (buy membership, attend more games)	1.3%	1.3%	14.3%
No change to my level of club support	31.2%	31.6%	81.8%
Attend same games against other SANFL clubs but not against AFL reserves	31.2%	27.6%	n/a
LESS Likely to support my club (not buy membership, attend less games)	14.3%	11.8%	0%
Walk away from my club altogether	22.1%	27.6%	3.9%
NET EFFECT	66% less support	66% less support	10% more support



PORT ADELAIDE



What is your Membership Category?		How many games do you attend in a year?		How old are you?	
Not A Member	32.1%	None	26.8%	13-18	3.6%
General Member No Ticket	17.9%	A few (1-5)	21.4%	18-30	21.4%
Home Match Ticket	23.2%	Quite a few (6-10)	26.8%	31-45	50.0%
Season Ticket Holder	26.8%	Quite a lot (11-15)	5.4%	45-65	23.2%
Player/Official	0.0%	Almost All (16-20)	19.6%	65+	1.8%

How would the following options affect you?

	Crows reserves in SANFL League	Power reserves in SANFL League	Crows & Power in other league (VFL)
MORE likely to support my club (buy membership, attend more games)	5.6%	46.3%	3.7%
No change to my level of club support	79.6%	40.7%	27.8%
Attend same games against other SANFL clubs but not against AFL reserves	5.6%	0.0%	n/a
LESS Likely to support my club (not buy membership, attend less games)	0.0%	1.9%	20.4%
Walk away from my club altogether	9.3%	11.1%	48.1%
NET EFFECT	9.3% less support	33.3% more support	64.8% less support

AFL RESERVES SURVEY



SOUTH ADELAIDE



What is your Membership Category?		How many games do you attend in a year?		How old are you?	
Not A Member	9.1%	None	4.5%	13-18	0.0%
General Member No Ticket	13.6%	A few (1-5)	13.6%	18-30	18.2%
Home Match Ticket	4.5%	Quite a few (6-10)	13.6%	31-45	31.8%
Season Ticket Holder	59.1%	Quite a lot (11-15)	22.7%	45-65	40.9%
Player/Official	13.6%	Almost All (16-20)	45.5%	65+	9.1%

How would the following options affect you?

	Crows reserves in SANFL League	Power reserves in SANFL League	Crows & Power in other league (VFL)
MORE likely to support my club (buy membership, attend more games)	4.5%	0.0%	9.1%
No change to my level of club support	45.5%	50.0%	90.9%
Attend same games against other SANFL clubs but not against AFL reserves	22.7%	22.7%	n/a
LESS Likely to support my club (not buy membership, attend less games)	4.5%	4.5%	0%
Walk away from my club altogether	22.7%	22.7%	0%
NET EFFECT	45.4% less support	50% less support	90.9% more support



STURT



What is your Membership Category?		How many games do you attend in a year?		How old are you?	
Not A Member	12.0%	None	8.0%	13-18	0.0%
General Member No Ticket	24.0%	A few (1-5)	28.0%	18-30	0.0%
Home Match Ticket	8.0%	Quite a few (6-10)	0.0%	31-45	64.0%
Season Ticket Holder	52.0%	Quite a lot (11-15)	20.0%	45-65	36.0%
Player/Official	4.0%	Almost All (16-20)	44.0%	65+	0.0%

How would the following options affect you?

	Crows reserves in SANFL League	Power reserves in SANFL League	Crows & Power in other league (VFL)
MORE likely to support my club (buy membership, attend more games)	4.0%	4.2%	20.0%
No change to my level of club support	40.0%	37.5%	80.0%
Attend same games against other SANFL clubs but not against AFL reserves	32.0%	29.2%	n/a
LESS Likely to support my club (not buy membership, attend less games)	12.0%	16.7%	0.0%
Walk away from my club altogether	12.0%	12.5%	0.0%
NET EFFECT	52% less support	54.2% less support	20% more support



AFL RESERVES SURVEY



WEST ADELAIDE



What is your Membership Category?		How many games do you attend in a year?		How old are you?	
Not A Member	14.3%	None	10.7%	13-18	0.0%
General Member No Ticket	14.3%	A few (1-5)	10.7%	18-30	17.9%
Home Match Ticket	3.6%	Quite a few (6-10)	7.1%	31-45	28.6%
Season Ticket Holder	50.0%	Quite a lot (11-15)	10.7%	45-65	50.0%
Player/Official	17.9%	Almost All (16-20)	60.7%	65+	3.6%

How would the following options affect you?

	Crows reserves in SANFL League	Power reserves in SANFL League	Crows & Power in other league (VFL)
MORE likely to support my club (buy membership, attend more games)	10.7%	3.7%	17.9%
No change to my level of club support	35.7%	40.7%	78.6%
Attend same games against other SANFL clubs but not against AFL reserves	14.3%	18.5%	n/a
LESS Likely to support my club (not buy membership, attend less games)	14.3%	7.4%	3.6%
Walk away from my club altogether	25.0%	29.6%	0.0%

NET EFFECT	43% less support	52% less support	14% more support
------------	------------------	------------------	------------------



NET EFFECT BY CLUB



	Crows reserves in SANFL League	Power reserves in SANFL League	Crows & Power in other league (VFL)
Glenelg	84% less support	88% less support	16% MORE support
Norwood	66% less support	66% less support	10% MORE support
Central	60% less support	58% less support	6% MORE support
North Adelaide	57% less support	59% less support	11% MORE support
Sturt	52% less support	54% less support	20% MORE support
South Adelaide	45% less support	50% less support	91% MORE support
West Adelaide	43% less support	52% less support	14% MORE support
Eagles	36% less support	36% less support	14% MORE support
Port Adelaide	9% less support	33% MORE support	65% less support



AFL RESERVES SURVEY



PORT & THE REST



What is your Membership Category? How many SANFL games do you attend in a year?

Category	Port	Rest	Games Attended	Port	Rest
Not A Member	32.1%	12.1%	None	26.8%	5.6%
General Member No Ticket	17.9%	18.9%	A few (1-5)	21.4%	14.1%
Home Match Ticket	23.2%	12.4%	Quite a few (6-10)	26.8%	12.3%
Season Ticket Holder	26.8%	50.7%	Quite a lot (11-15)	5.4%	15.5%
Player/Official	0.0%	5.9%	Almost All (16-20)	19.6%	52.5%

How would the following options affect you?

	Club Supported	Crows res in SANFL League	Power res in SANFL League	Crows & Power in other league (VFL)
MORE likely to support my club (buy membership, attend more games)	Port Rest	5.6% 4.5%	46.3% 3.3%	3.7% 17.1%
No change to my level of club support	Port Rest	79.6% 33.8%	40.7% 34.7%	27.8% 77.1%
Attend same games against other SANFL clubs but not against AFL reserves	Port Rest	5.6% 19.8%	0.0% 19.5%	N/A N/A
LESS Likely to support my club (not buy membership, attend less games)	Port Rest	0% 15.0%	1.9% 12.6%	20.4% 2.4%
Walk away from my club altogether	Port Rest	9.3% 27.0%	11.1% 29.3%	48.1% 3.6%
NET EFFECT	Port Rest	9% less support 57% less support	33% MORE SUPPORT 58% less support	65% less support 11% MORE SUPPORT

Thanks to all who took part in the survey. As promised these results along with the individual comments provided have been passed onto the SANFL clubs.

Phil Herden
Editor, FOOT-e TIMES SA